



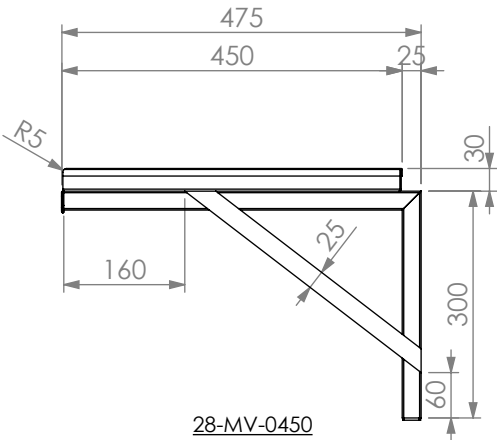
# SIMPLY STAINLESS

Modular Sinks, Tables & Shelving

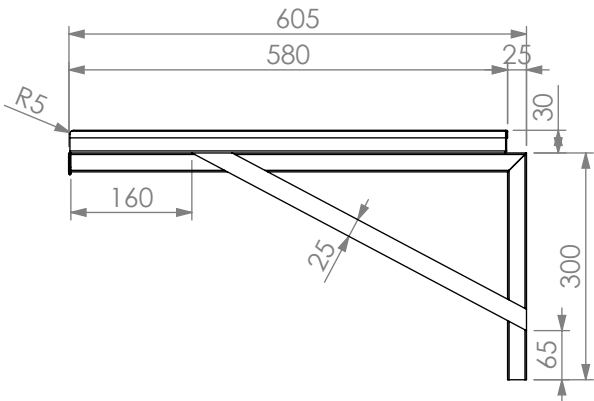


\*WALL MOUNTING BRACKETS CAN BE REVERSED SUBJECT TO SITE REQUIREMENTS.

SPECIFICATION	
Tops	<ul style="list-style-type: none"><li>- High quality stainless steel.</li><li>- 1.2mm gauge, no. 4 Finnish.</li><li>- Safety edge all around.</li></ul>
Frames	<ul style="list-style-type: none"><li>- 25mm square tube stainless steel.</li><li>- 3mm Stainless flat bar.</li><li>- Pre drilled holes.</li></ul>



28-MV-0450



28-MV-0580

28	Microwave Shelf		
	Product Code	Dimensions (mm)	Unit weight (Kg)
	28-MW-0450	600x475x330	6
	28-MW-0580	600x605x330	7



100%  
RECYCLABLE  
STAINLESS STEEL

